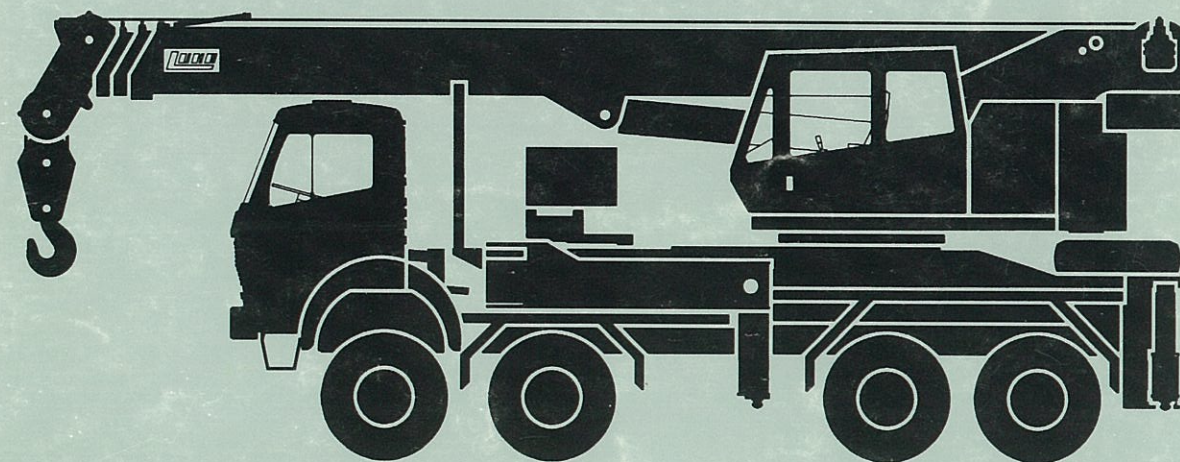


1996



GRÚA TELESCÓPICA SOBRE CAMIÓN
TELESCOPIC TRUCK MOUNTED CRANE
GRUE TÉLESCOPIQUE SUR CAMION
TELESKOP-AUTOKRAN

GT-45/30



Datos sujetos a modificación sin previo aviso./ Technical data subject to modifications./ Ces renseignements sont modifiables sans préavis./ Änderungen vorbehalten.



Oficina / Offices:
TALLERES LUNA, S.A.
Alcampel, 5 y 7 - Zona Industrial
P.O. BOX 115 • 22080 HUESCA (SPAIN)
Tel. 974 - 21 10 20 (Nat'l)
+34 - 74-21 10 20 (Int'l)
Fax +34 - 74-21 01 42 (Int'l)
Telex 58362 LUGH-E-58373 ILSA-E

Obchodné zastúpenie :

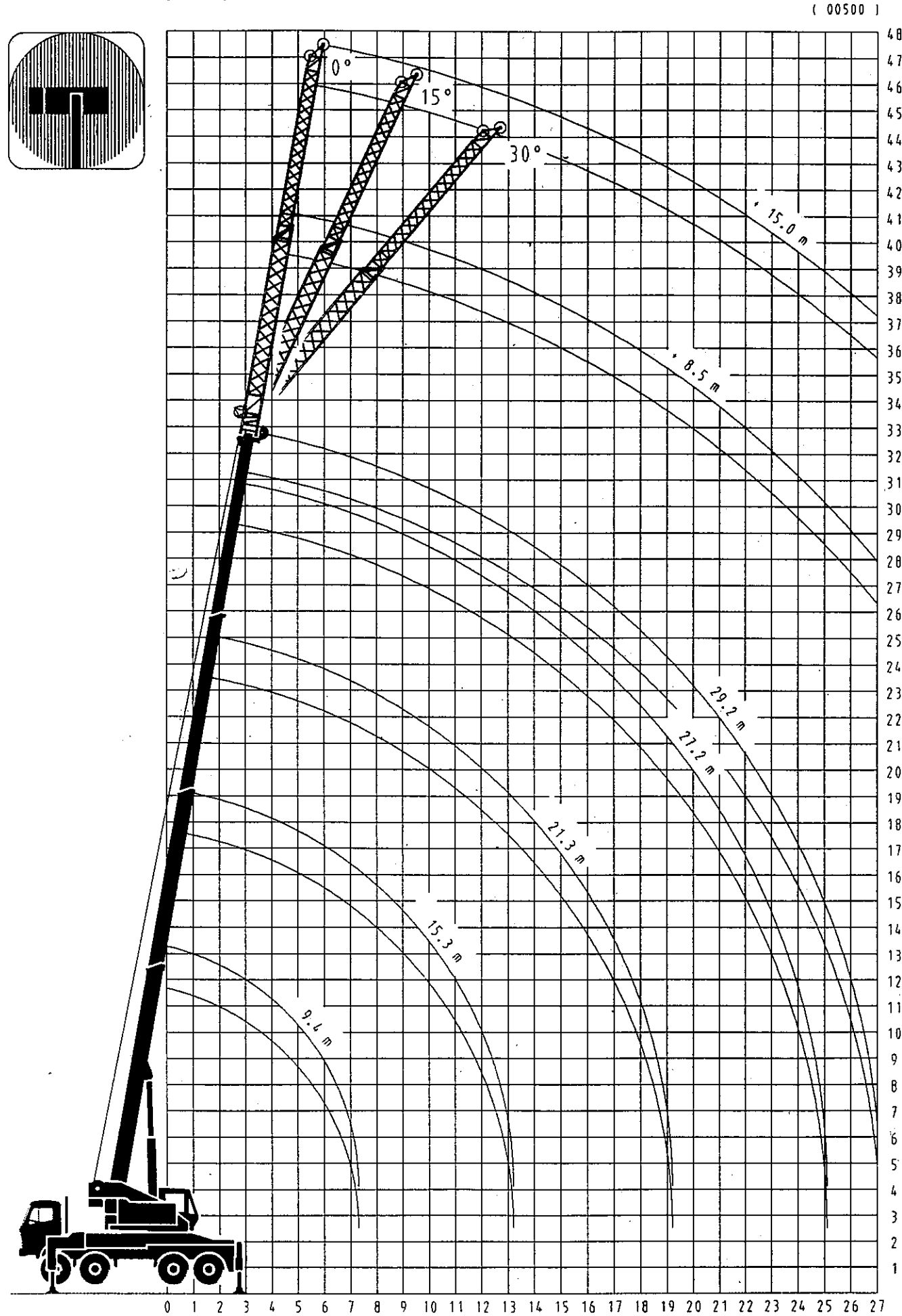
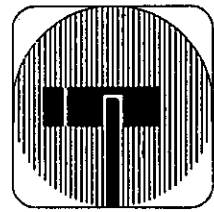
BARTIMEX, spol. s r. o.

Bajkalská 41, 821 09 Bratislava, SK

Tel.: 07/5217269 Fax: 07/5212615

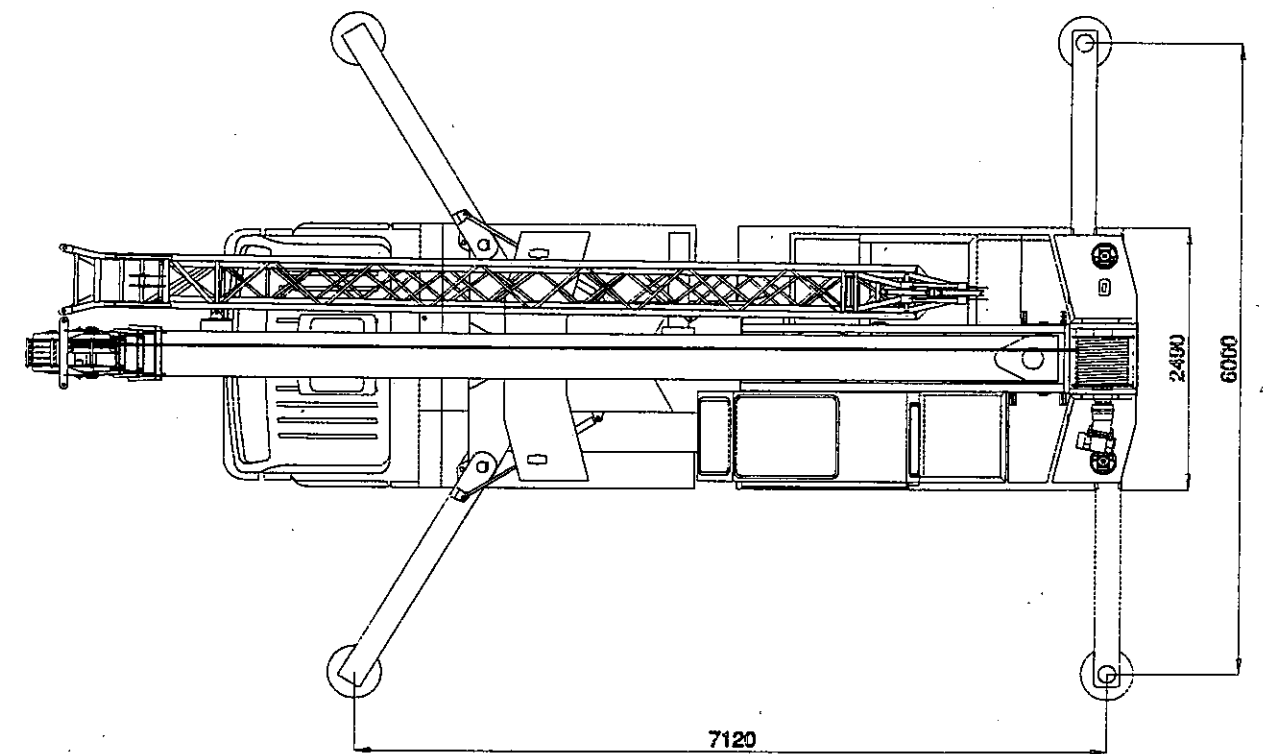
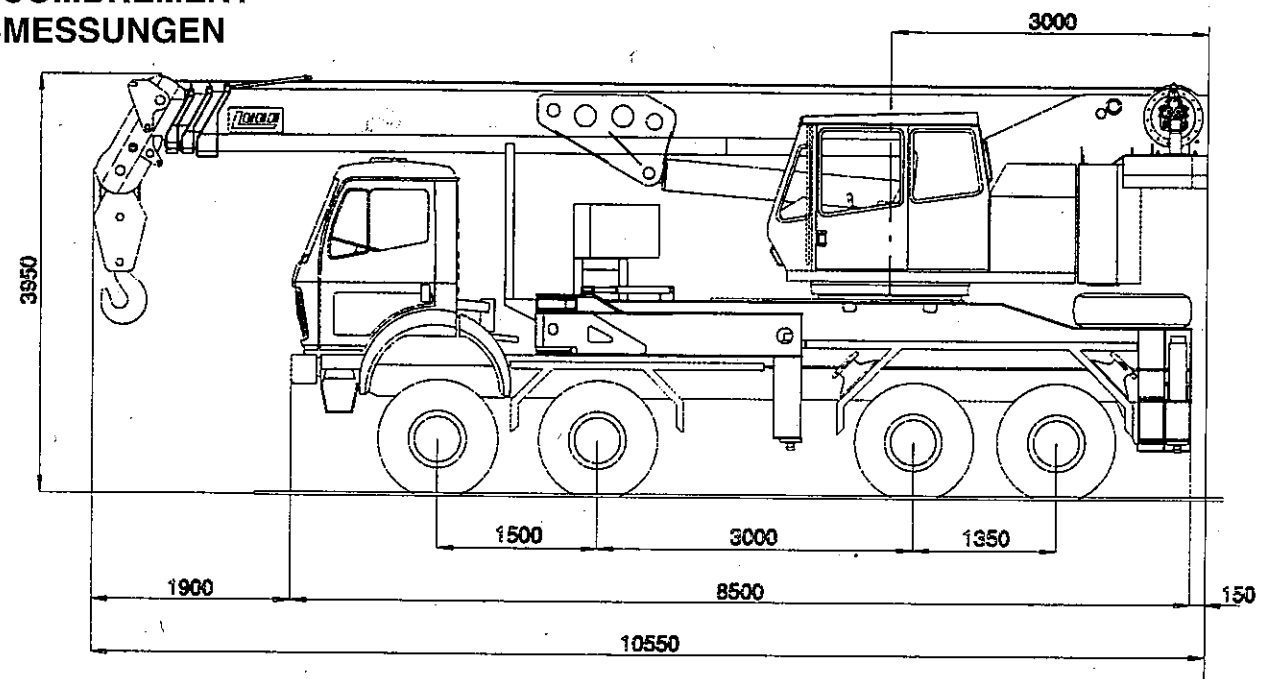
DIAGRAMA DE ALCANCES
 RANGE DIAGRAM
 DIAGRAMME DES PORTÉES
 AUSLADUNGSDIAGRAMM

GT453000400



DIMENSIONES
 DIMENSIONS
 ENCOMBREMENT
 ABMESSUNGEN

GT453000400



PESOS / WEIGHTS / POIDS / GEWICHTE

Eje Axle Essieu Achse	1	2	TANDEM	Peso total Total weight Poids total Gesamtgewicht
t	7.5	7.5	23	32/38*

* Con un camión de 11200 Kg, contrapeso de 2/8 t y depósitos llenos./ Including 11200 Kg truck, 2/8 t counterweight and filled tanks./ Avec un camion de 11200 Kg, contrepoids de 2/8 t et réservoirs pleins./ Einschliesslich LKW von 11200 Kg, 2/8 t Ballast und gefüllter Tanks.

**TABLA DE CARGAS
LIFTING CAPACITIES
FORCES DE LEVAGE
TRAGLASTEN**

Momento máximo de carga: 137.5 t·m
Maximum load moment: 137.5 t·m
Couple de charge maximale: 137.5 t·m
Max. Lastmoment: 137.5 t·m

CONTRAPESO
COUNTERWEIGHT
CONTREPOIDS
BALLAST
8 t

GT453000400

01311-01322

PLUMA PRINCIPAL. GRÚA SOBRE ESTABILIZADORES TOTALMENTE EXTENDIDOS. ZONA DE TRABAJO 360°
MAIN BOOM. CRANE ON FULLY EXTENDED OUTRIGGERS. ROTATION 360°
FLÈCHE PRINCIPALE. GRUE SUR STABILISATEURS EN EXTENSION TOTALE. ROTATION 360°
TELESKOPUSLEGER. ARBEITSZUSTAND: ABGESTÜTZT (VOLLE STÜTZBASIS). ARBEITSBEREICH: 360°

RADIO RADIUS PORTÉE AUSLADUNG m	75%					RADIO RADIUS PORTÉE AUSLADUNG m	
	LONGITUD DE PLUMA BOOM LENGTH LONGUEUR DE FLÈCHE TELESKOPUSLEGERLÄNGEN						
	9.4 m	15.3 m	21.3 m	27.2 m	29.2 m		
2.5	45.0	22.5	14.5			2.5	
3	40.0	22.0	14.9	14.0		3	
4	30.0	20.0	15.4	13.5		4	
5	25.0	17.5	16.0	12.7	9.0	7.5	5
6	20.6	15.5	16.0	12.0	9.0	7.5	6
7	17.0	13.7	15.5	11.0	9.0	7.4	7
8		12.1	14.0	10.0	8.3	7.0	8
9		10.8	12.2	9.0	7.7	6.6	9
10		9.3	10.8	8.1	7.1	6.2	10
11		8.3	9.5	7.3	6.6	5.8	11
12		7.3	8.2	6.7	6.0	5.4	12
13		6.5	7.2	6.1	5.6	5.0	13
14				5.7	5.1	4.7	14
15				5.2	4.7	4.4	15
16				4.8	4.4	4.2	16
17				4.4	4.2	4.0	17
18				4.0	3.9	3.8	18
19				3.8	3.7	3.6	19
20					3.4	3.4	20
21					3.2	3.2	21
22					3.0	3.0	22
23					2.8	2.8	23
24					2.6	2.6	24
25					2.4	2.4	25
26						2.2	26
27						2.0	27

RADIO RADIUS PORTÉE AUSLADUNG m	85%					RADIO RADIUS PORTÉE AUSLADUNG m	
	LONGITUD DE PLUMA BOOM LENGTH LONGUEUR DE FLÈCHE TELESKOPUSLEGERLÄNGEN						
	9.4 m	15.3 m	21.3 m	27.2 m	29.2 m		
2.5	45.0	24.8	14.5			2.5	
3	40.0	24.2	14.9	15.4		3	
4	30.0	22.0	15.4	14.9		4	
5	27.5	19.3	16.0	14.0	9.0	7.5	5
6	22.7	17.1	16.5	13.2	9.0	7.5	6
7	18.7	15.1	17.0	12.1	9.0	7.5	7
8		13.3	15.4	11.0	9.0	7.5	8
9		11.9	13.4	9.9	8.5	7.3	9
10		10.2	11.9	8.9	7.8	6.8	10
11		9.1	10.5	8.0	7.3	6.4	11
12		8.0	9.0	7.4	6.6	5.9	12
13		7.2	7.9	6.7	6.2	5.5	13
14				6.3	5.6	5.2	14
15				5.7	5.2	4.8	15
16				5.3	4.8	4.6	16
17				4.8	4.6	4.4	17
18				4.4	4.3	4.2	18
19				4.2	4.1	4.0	19
20					3.7	3.7	20
21					3.5	3.5	21
22					3.3	3.3	22
23					3.1	3.1	23
24					2.9	2.9	24
25					2.6	2.6	25
26						2.4	26
27						2.2	27

I	0	90	30	60	90	100	I
II-III	0	0	30	60	90	100	II-III

**TABLA DE CARGAS
LIFTING CAPACITIES
FORCES DE LEVAGE
TRAGLASTEN**

CONTRAPESO
COUNTERWEIGHT
CONTREPOIDS
BALLAST
2 t

GT453000400

01011-01022

PLUMA PRINCIPAL. GRÚA SOBRE ESTABILIZADORES TOTALMENTE EXTENDIDOS. ZONA DE TRABAJO 360°
MAIN BOOM. CRANE ON FULLY EXTENDED OUTRIGGERS. ROTATION 360°
FLÈCHE PRINCIPALE. GRUE SUR STABILISATEURS EN EXTENSION TOTALE. ROTATION 360°
TELESKOPUSLEGER. ARBEITSZUSTAND: ABGESTÜTZT (VOLLE STÜTZBASIS). ARBEITSBEREICH: 360°

RADIO RADIUS PORTÉE AUSLADUNG m	75%					RADIO RADIUS PORTÉE AUSLADUNG m	
	LONGITUD DE PLUMA BOOM LENGTH LONGUEUR DE FLÈCHE TELESKOPUSLEGERLÄNGEN						
	9.4 m	15.3 m	21.3 m	27.2 m	29.2 m		
2.5	45.0	22.5	14.5			2.5	
3	40.0	22.0	14.9	14.0		3	
4	30.0	20.0	15.4	13.5		4	
5	24.0	17.5	16.0	12.7	9.0	7.5	5
6	19.0	15.0	15.5	12.0	9.0	7.5	6
7	15.0	12.6	14.5	11.0	9.0	7.4	7
8		10.7	12.0	10.0	8.3	7.0	8
9		9.0	9.7	8.9	7.7	6.6	9
10		7.5	8.3	7.9	7.0	6.2	10
11		6.2	7.1	7.0	6.4	5.8	11
12		5.2	6.1	6.2	5.8	5.4	12
13		4.5	5.4	5.6	5.2	5.0	13
14				4.9	4.7	4.5	14
15				4.2	4.2	4.1	15
16				3.7	3.7	3.7	16
17				3.2	3.3	3.3	17
18				2.9	3.0	3.0	18
19				2.5	2.7	2.7	19
20					2.4	2.4	20
21					2.2	2.2	21
22					2.0	2.0	22
23					1.8	1.8	23
24					1.6	1.6	24
25					1.4	1.4	25
26						1.2	26
27						0.9	27

RADIO RADIUS PORTÉE AUSLADUNG m	85%					RADIO RADIUS PORTÉE AUSLADUNG m	
	LONGITUD DE PLUMA BOOM LENGTH LONGUEUR DE FLÈCHE TELESKOPUSLEGERLÄNGEN						
	9.4 m	15.3 m	21.3 m	27.2 m	29.2 m		
2.5	45.0	24.8	14.5			2.5	
3	40.0	24.2	14.9	15.4		3	
4	30.0	22.0	15.4	14.9		4	
5	26.4	19.3	16.0	14.0	9.0	7.5	5
6	20.9	16.5	16.5	13.2	9.0	7.5	6
7	16.5	13.9	16.0	12.1	9.0	7.5	7
8		11.8	13.2	11.0	9.0	7.5	8
9		9.9	10.7	9.8	8.5	7.3	9
10		8.3	9.1	8.7	7.7	6.8	10
11		6.8	7.8	7.7	7.0	6.4	11
12		5.7	6.7	6.8	6.4	5.9	12
13		5.0	5.9	6.2	5.7	5.5	13
14				5.4	5.2	5.0	14
15				4.6	4.6	4.5	15
16				4.1	4.1	4.1	16
17				3.5	3.6	3.6	17
18				3.2	3.3	3.3	18
19				2.8	3.0	3.0	19
20					2.6	2.6	20
21					2.4	2.4	21
22					2.2	2.2	22
23					2.0	2.0	23
24					1.8	1.8	24
25					1.5	1.5	25
26						1.3	26
27						1.0	27

I	0	90	30	60	90	100	I
II-III	0	0	30	60	90	100	II-III

